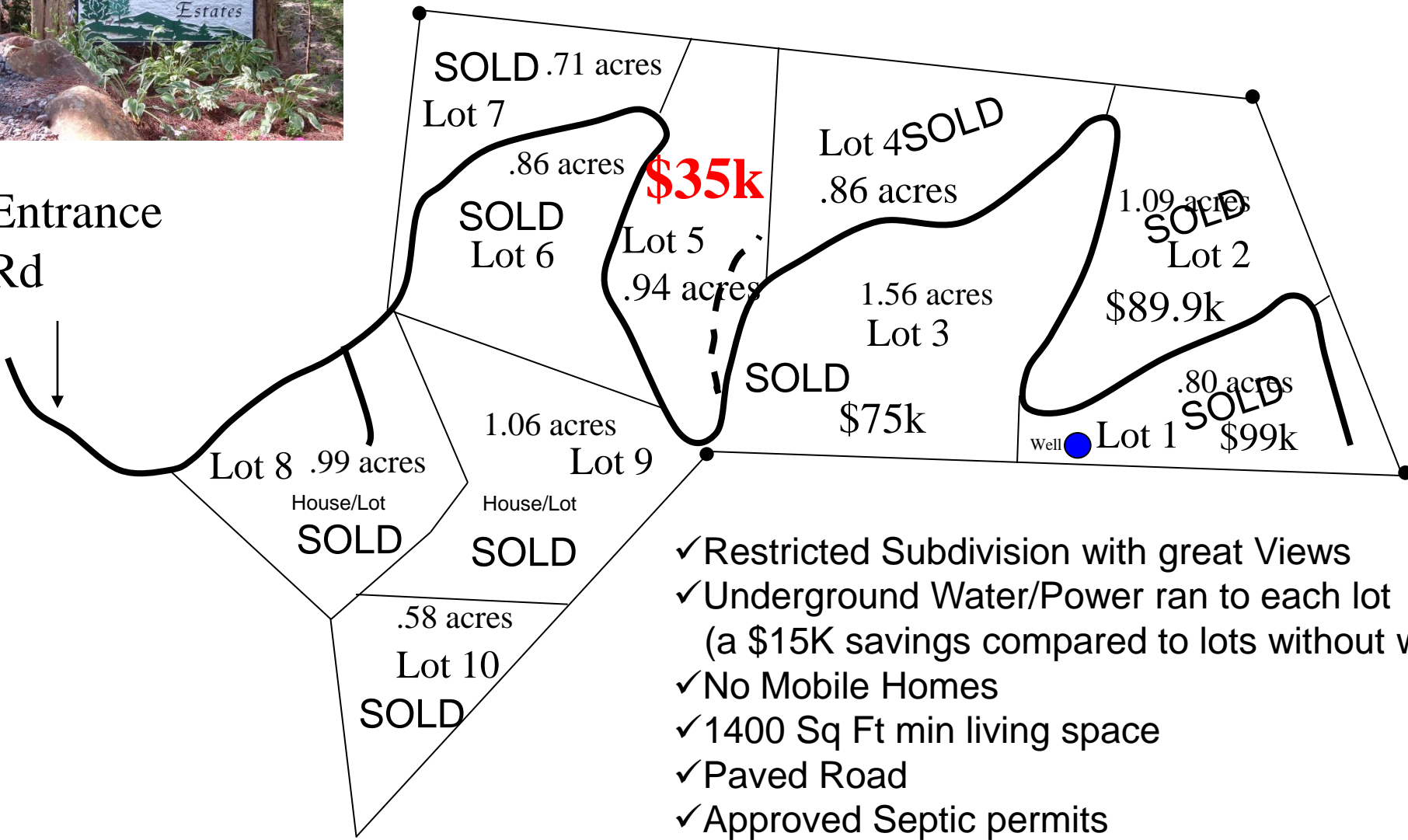




Corkill Mountain Estates

Entrance Rd

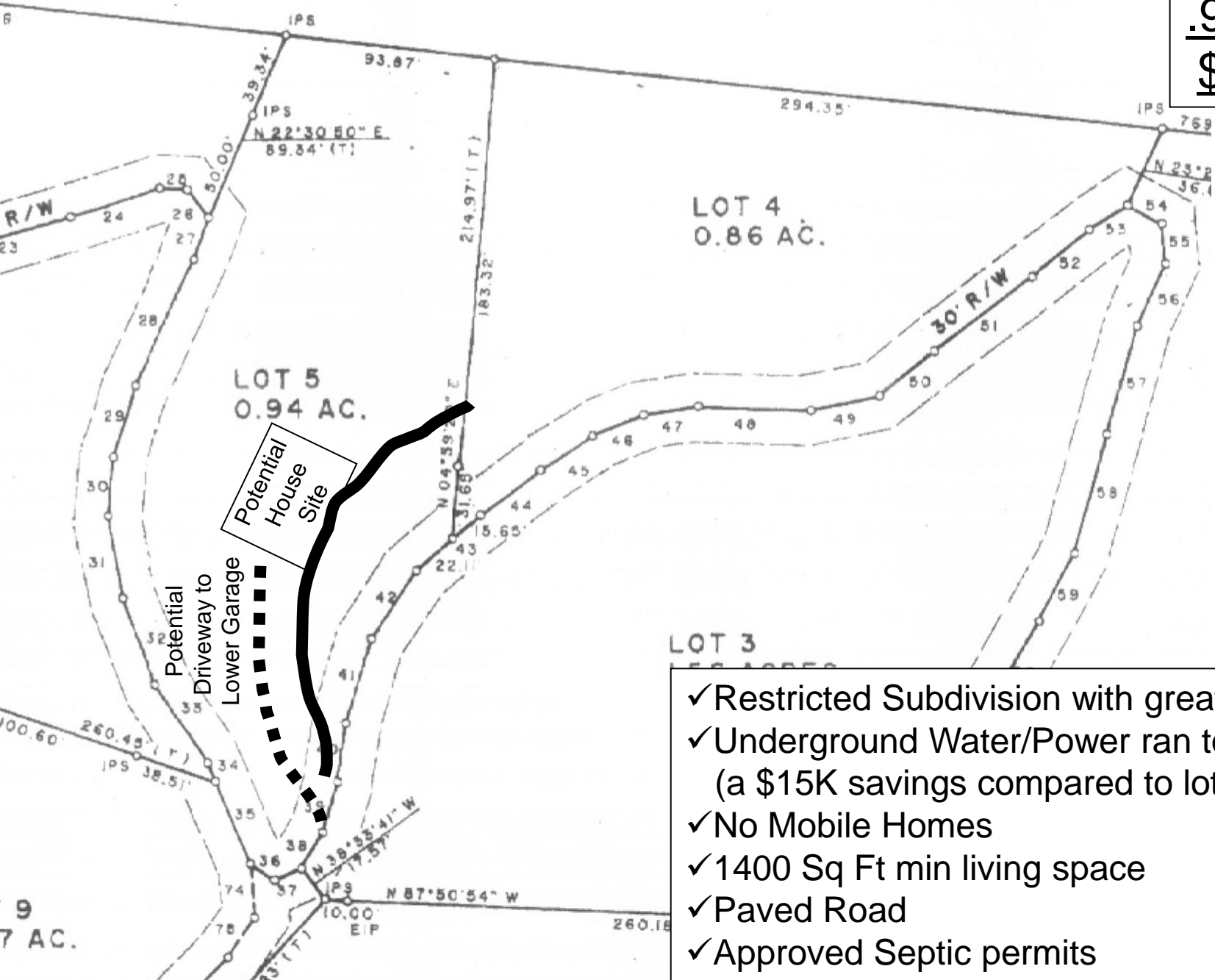


- ✓ Restricted Subdivision with great Views
- ✓ Underground Water/Power ran to each lot (a \$15K savings compared to lots without water)
- ✓ No Mobile Homes
- ✓ 1400 Sq Ft min living space
- ✓ Paved Road
- ✓ Approved Septic permits

For More Information, Contact Owner at: 828-200-0161

Or visit www.corkillproperties.com

Lot 5
.94 acres
\$35,000



- ✓ Restricted Subdivision with great Views
- ✓ Underground Water/Power ran to each lot (a \$15K savings compared to lots without water)
- ✓ No Mobile Homes
- ✓ 1400 Sq Ft min living space
- ✓ Paved Road
- ✓ Approved Septic permits